

DIRECT CONNECTION

SMARTCARD METERED UNIT

16A, 32A & 63A

ROLEC
Caravan Hook-Ups



Unit shown: 63A Direct Connection Unit
Smartcard Metered

This direct connection unit is a hard-wearing, cost effective MID approved smartcard metered connection unit specifically designed to provide a 16A, 32A or 63A pre-payment electrical supplies via its direct connection facility to the residential home.

This connection unit is complete with switchgear, providing both overload and fault current protection which is accessible via the switchgear access flap.

PRODUCT FEATURES

- Available in 16A, 32A & 63A versions
- MID compliant smartcard metering
- Built-in overload and 30mA fault current protection
- IP65 weatherproof polycarbonate enclosure
- Built-in cable terminals
- Switchgear access flap
- Optional galvanised mounting post
- Easy to install & maintain
- IP Rated & UV stabilised
- Fire retardant



For Residential/Holiday
Homes & Static Caravans



Smartcard
Metering



Easy-To-Use
Software



IP Rated &
UV Stabilised



Strong
& Durable



CE
Certified

SPECIFICATIONS

PRODUCT OVERVIEW

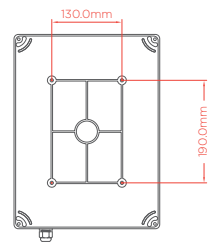
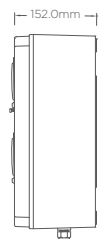
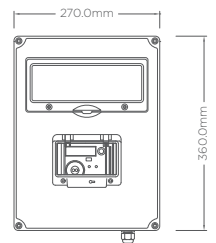
Product Code	Output	Fault Protection	Metering	Enclosure
LSAB0100	16A	16A 30mA RCBO	63A Class 1 Smartcard Meter	Large
LSAB0120	32A	32A 30mA RCBO		
LSAB0130	63A	C63A 1pole MCB, 63A 30mA RCD		

TECHNICAL DATA

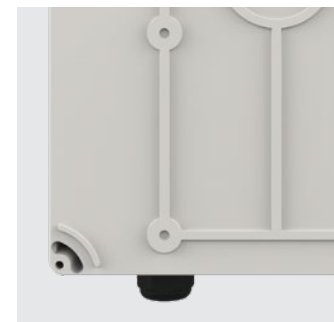
Input Voltage	220 to 250 VAC / 50 Hz (Single Phase)
Cable Terminals	3x 50mm and Compression Gland (Others sizes Available on Request)
Earthing	Brass Earth Plate & Earth Terminals
Certifications & Compliances	Enclosure - EN 60670-1, EN 60670-22
	Flame Retardance - IEC 60695-2-11:2014
	Low Voltage Directive (LVD) - 2014/35/EU
	Environmental Protection - IP65 Enclosure
	Weather resistance - BS EN 60529:1992+A2:2013
	Cable - BS 6004
CE	Metering - EN50470-1, EN50470-3, 2004/22/EC, MID B+D Certified
	RoHS - 2011/65/EU
	REACH - 1907/2006
Dimensions	Large - 270mm x 360mm x 152mm (W x H x D) Post Mounting Fixing Points- 130mm x 190mm (W x H)
Materials	Polycarbonate Enclosure
Operating Temperature	-25°C to +60°C
Colour	Grey

OPTIONS & ACCESSORIES

- Galvanised ground mounting post (product code LSAF0060)
- Photocell kit to control park lighting
- Smartcard meter system software & smartcard reader/writer
- Re-useable smartcards (printing/branding available)



Large Enclosure



Images are for marketing purposes only and are not contractual © 2021



Head office contact:
t: +44 (0) 1205 724754
f: +44 (0) 1205 724876
enquiries@rolecserv.co.uk

Rolec Services Ltd
Ralphs Lane, Frampton West
Boston, Lincolnshire
UK. PE20 1QU

@RolecCaravan
/Rolec-Services
www.rolecserv.com

LSADCSMD-V01-R0 Direct Connection Smartcard Metered - Data Sheet