

HOOK-UP CONNECTION

METERED UNIT

1, 2, 3 & 4way, Interlock Sockets
16A or 32A



ROLEC
Caravan Hook-Ups



Available in 1, 2, 3 and 4way options, this cost effective and hard-wearing hook-up unit is suitable for all caravan and holiday parks. With its IP44 interlock sockets, this hook-up unit ensures a safe and secure electrical connection(s).

Equipped with MID approved kWh meter(s) which can be visually read through meter viewing windows/flaps located on the front of the units.

Complete with an IP65 weatherproof polycarbonate enclosure, built-in cable terminals and switchgear access flaps with an optional galvanised ground mounting post.

Unit shown: Hook-Up Connection Unit
Metered
2way Interlock Sockets

PRODUCT FEATURES

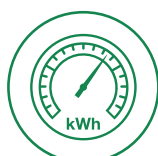
- IP44 interlock socket
- Available in 16A or 32A versions
- 18th edition regulations compliant
- **MID** compliant kWh metering
- Built-in overload and 30mA fault current protection
- IP65 weatherproof polycarbonate enclosure
- Built-in cable terminals
- Switchgear access flap
- Optional galvanised mounting post
- Easy to install & maintain
- IP Rated & UV stabilised
- Fire retardant



Interlock
Sockets



For Touring/Static
Caravans & Camp Sites



Miniature kWh
Metering



IP Rated &
UV Stabilised



Strong
& Durable



CE
Certified


SPECIFICATIONS

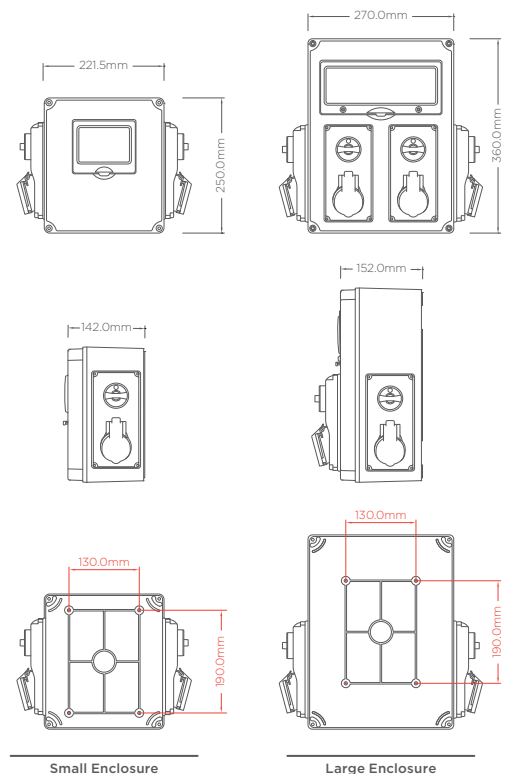
PRODUCT OVERVIEW

Product Code	Socket(s)	Output	Fault Protection	Metering	Enclosure
LSAB0010i	1 Way Interlock 	1x 16A	1x 16A 30mA RCBO	1x 45A kWh Meter	Small
LSAB0010i-10A		1x 10A*	1x 10A 30mA RCBO		
LSAB0030i		1x 32A	1x 32A 30mA RCBO		
LSAC0010i	2 Way Interlock 	2x 16A	2x 16A 30mA RCBOs	2x 45A kWh Meters	Small
LSAC0010i-10A		2x 10A*	2x 10A 30mA RCBOs		
LSAC0030i		2x 32A	2x 32A 30mA RCBOs		
LSAH0090i	3 Way Interlock 	3x 16A	3x 16A 30mA RCBOs	3x 45A kWh Meters	Large
LSAH0090i-10A		3x 10A*	3x 10A 30mA RCBOs		
LSAH0100i	4 Way Interlock 	4x 16A	4x 16A 30mA RCBOs	4x 45A kWh Meters	Large
LSAH0100i-10A		4x 10A*	4x 10A 30mA RCBOs		

*Supplied with 16A socket(s) restricted to a 10A output

TECHNICAL DATA

Input Voltage	220 to 250 VAC / 50 Hz (Single Phase)
Cable Terminals	3x50mm Tunnel Terminals Fitted as Standard (Others sizes Available on Request)
Earthing	Brass Earth Plate & Earth Terminals
Certifications & Compliances	Enclosure - EN 60670-1, EN 60670-22 Flame Retardance - IEC 60695-2-11:2014 Low Voltage Directive (LVD) - 2014/35/EU Environmental Protection - IP65 Enclosure, IP44 Socket(s) Weather resistance - BS EN 60529:1992+A2:2013 Socket(s) - BS EN 60309-2:1999+A2:2012 Cable - BS 6004 Metering - EN50470-1, EN50470-3, 2004/22/EC, MID B+D Certified RoHS - 2011/65/EU REACH - 1907/2006
	
Dimensions	Small - 221.5mm x 250mm x 142mm (W x H x D) Large - 270mm x 360mm x 152mm (W x H x D) Post Mounting Fixing Points- 130mm x 190mm (W x H)
Materials	Polycarbonate Enclosure
Operating Temperature	-25°C to +60°C
Colour	Grey



OPTIONS & ACCESSORIES

- Galvanised ground mounting post (product code LSAF0060)
- Photocell kit available to control park lighting
- Non-metered & smartcard metered versions available

Images are for marketing purposes only and are not contractual © 2020



Head office contact:
t: +44 (0) 1205 724754
f: +44 (0) 1205 724876
rolec@rolecserv.co.uk

Rolec Services Ltd
Ralphs Lane, Frampton West
Boston, Lincolnshire
UK. PE20 1QU

 @RolecCaravan
 /Rolec-Services
www.rolecserv.com

LSACHUIMD-V02-R0 Hook-Up Connection Interlock Metered - Data Sheet